



Car Parts
Online
Catalogue



FORUM

Google Search

Web www.vagcat.com

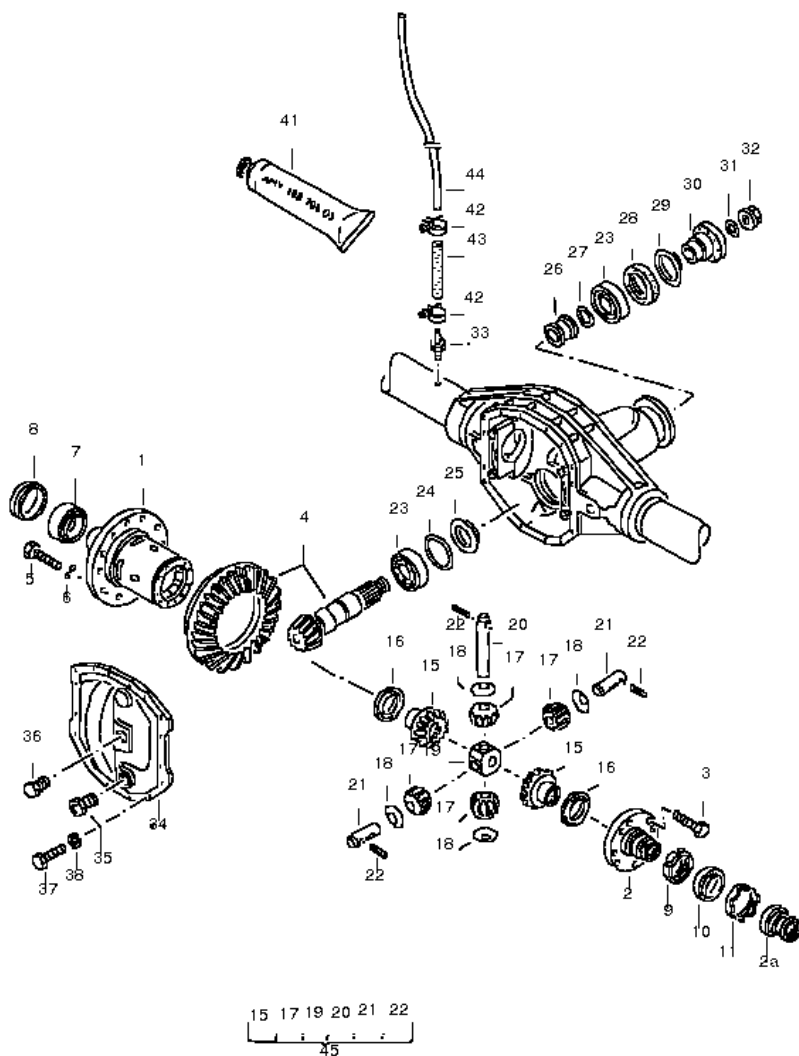
LT, LT 4x4, year - 1988

Page: DIFFERENTIAL / FRONT AXLE // 4X4

« Previous illustration

Return to group list

Next illustration »



Partlist:

differential / 4X4

front axle

/

1 [291525121B](#)

housing for differential

/

2 [291525285](#)

flange / for vehicles with / differential lock, engageable

/

(2) [291525285A](#)

flange

/

2A [291525116](#)

shift rod coupling / for vehicles with / differential lock, engageable

/

3 [N 0348794](#)

hexagonal head bolt
M12X30 /

4 [291525143L](#)

pinion and crown wheel
43:8 /

5 [291525258](#)

hexagonal head bolt
M12X1,25X30 /

6 [N 0122323](#)

spring washer
B12X24X1,2 /

7 [291525193B](#)

taper roller bearing

/

8 [291525231A](#)

adjusting washer
7,2 /

(8) [291525231B](#)

adjusting washer
7,15 /

(8) [291525231C](#)

adjusting washer
7,1 /

(8) [291525231D](#)

adjusting washer
7,05 /

(8) [291525231E](#)

adjusting washer
7 /

(8) [291525231F](#)

adjusting washer
6,95 /

(8) [291525231G](#)

adjusting washer
6,9 /

(8) [291525231H](#)

adjusting washer
7,25 /

(8) [291525231J](#)

adjusting washer
7,3 /

9 [291525134](#)

adjusting nut

/

10 [291525193A](#)

taper roller bearing

/

11 [291525126](#)

spacer ring

/

16 [291525183](#)

thrust washer

/

